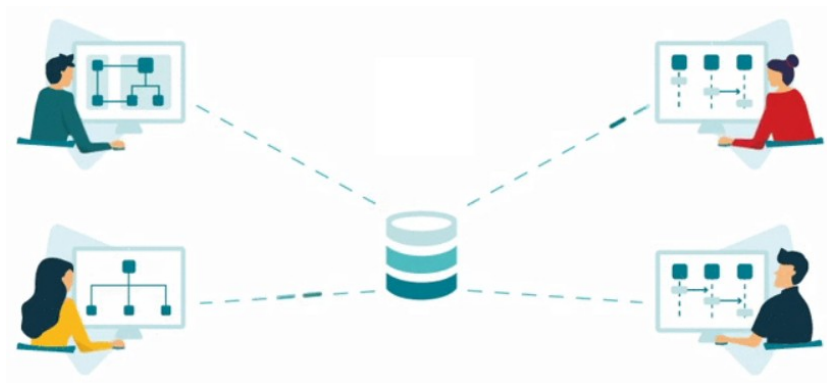


Working in a Multi-user Mode with Team for Capella



Maxime Porhel

Product Lead @Obeo

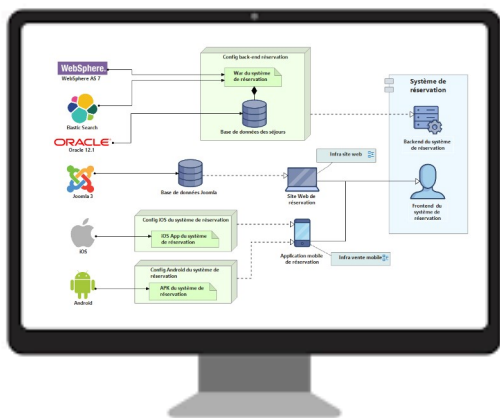


Obeo

Company Profile

Obeo | Visual Tools for Designing Innovations

We develop cutting-edge **modeling** software to empower teams **designing** or **transforming** complex systems



We are a global reference player
in the field of open-source

2500

Number of FTE days of
open-source contributions in 2023



Domain-Specific Modeling



Model-Based Systems Engineering



Continuous Enterprise Architecture

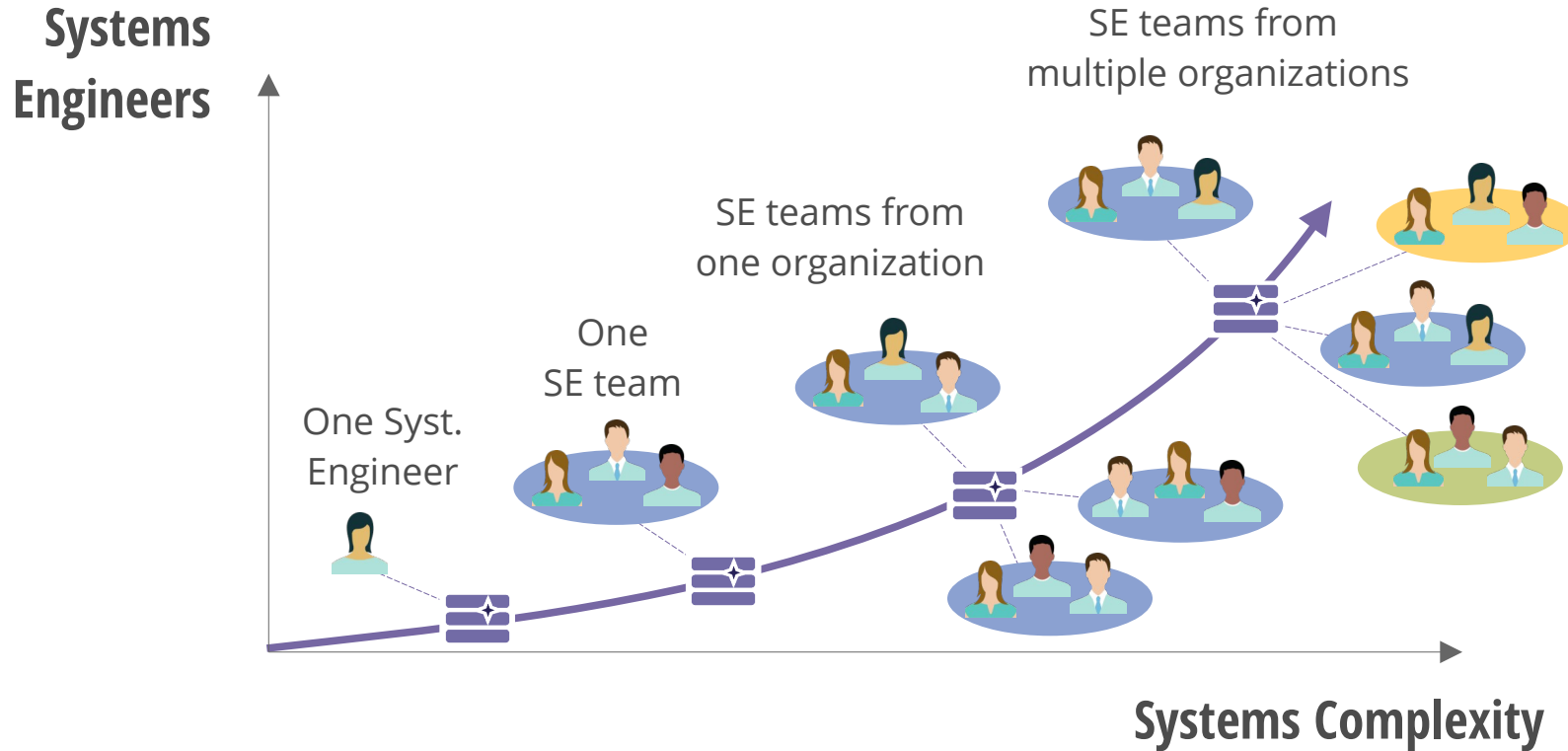


Capella and Obeo | We're involved since the beginning

- **We developed Sirius**
 - The graphical framework on which Capella workbench is based
- **We managed the migration to open-source**
 - Setting-up the Eclipse development process
 - Applying the Eclipse best-practices
- **We contribute to the development of Capella**
 - 6 active committers to the source-code
 - Website management and events organization (Capella Days and webinars)
- **We provide Capella add-ons**
 - Document generation : *M2Doc*
 - Collaboration : *Team for Capella, Publication for Capella, Cloud for Capella, Ecodesign for Capella, ...*

Tailoring Capella for your most-critical projects

Mastering Large-Scale Systems Engineering Projects



Context of Real-life Projects using Capella



OneSky project (Australian Civil and Military Air Traffic Management System)

*„Development of a complex System of Systems (SoS) composed of more than **10** systems, deployed at **12** sites, and providing more than **50** interfaces to legacy systems, (...) which led to the formalization of more than **6000** solution requirements“.*

Laura Mallon & Peter Havanga – Capella Days 2021



Transmission Electron Microscopes

*„Three product line families, composed of **400** modules with a total of over **1,000** active configurations, which are continuously upgraded and updated over a **20-year** lifespan by **400** engineers across **4** sites in Europe“.*

Joost Dierkse - Capella Days 2022



Galileo 2nd Generation

*„Core system composed of currently **28** satellites in orbit (**24** providing service worldwide), **2** ground centres, **15** remote sites worldwide complemented by a set of service facilities“.*

Catherine Morlet & Alberto Gonzalez Fernandez – Capella Days 2023





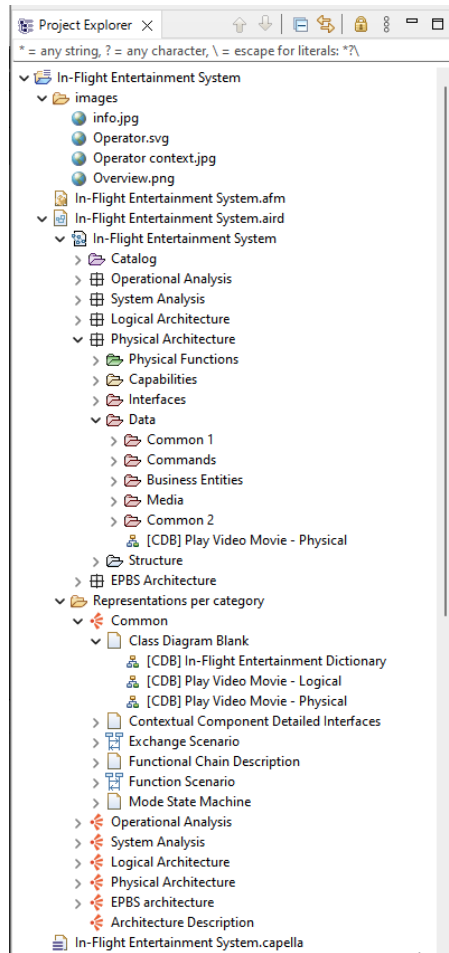
Capella

Collaboration with files

Capella | File oriented

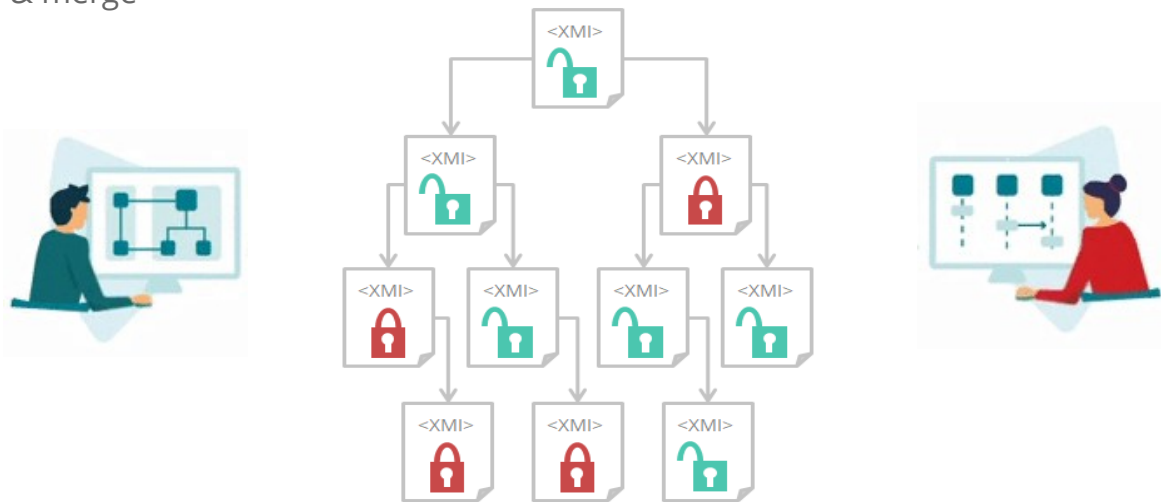
- **Capella Project**

- three main files:
 - .capella: Capella semantic model
 - components, functions, capabilities and all Capella concepts
 - .aird: graphical data
 - tables, diagrams, layout, ...
 - .afm: metadata file for version and enabled Viewpoints consistency checks
- Diagrams displayed
 - as children of their root object
 - in *Representations per category* subtree
- Capella model tree displayed as child of the .aird file



Capella | Collaboration with files: reconciliation using diff & merge

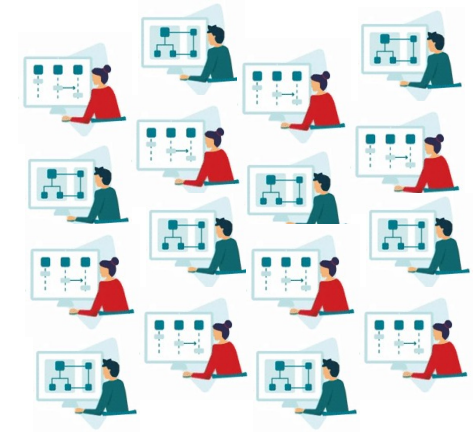
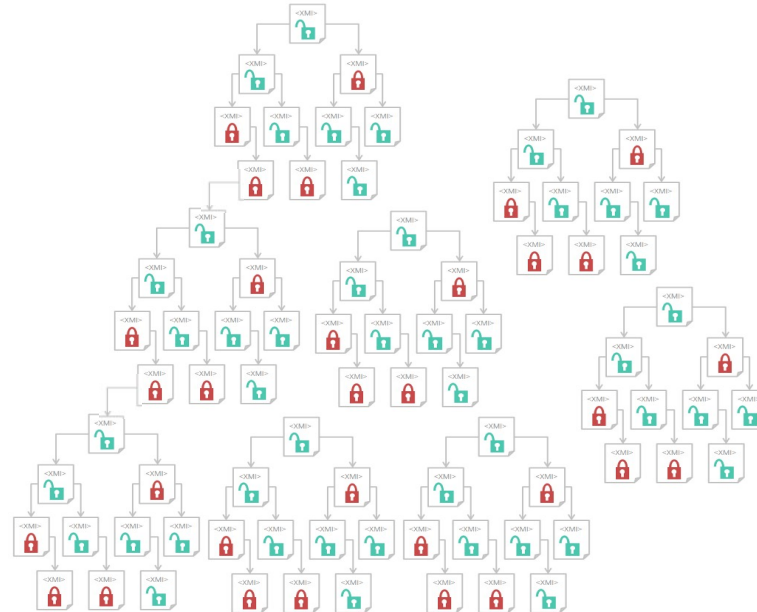
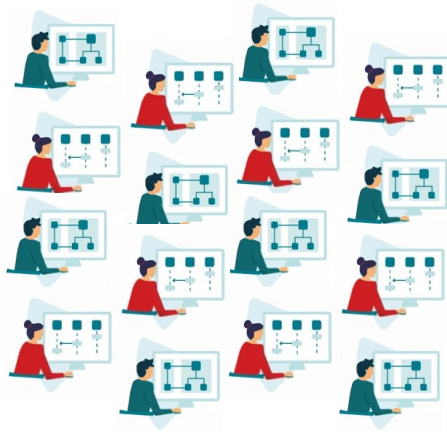
- **Classic collaboration problems with files**
 - Version identification with rename/suffixes
 - Split the model into fragment files (Fragment... menu, creating .capellafragment and .airdfragment files)
 - Manage the files with a Software Configuration Management tool
 - Manage locks and identify changes at a file level
 - Reconcile using diff & merge



Capella | Collaboration with files: reconciliation using diff & merge

- **Limitation of the fragmentation approach**

- Capella and Graphical models are directed graphes of objects with multiple inter-objects references
- Changes can have impacts in several parts of the model
 - Numerous technical objects are not displayed to the end user
 - Elements like Traceability/Allocation links are not stored closed to their referenced elements




Capella | Collaboration with files: reconciliation using diff & merge

- Managing **conflicts** and **reconciliations with your team** using diff/merge tool is **time consuming** and **not error-proof**

The image displays three side-by-side screenshots of the Capella IDE interface, illustrating the process of model reconciliation using diff and merge tools.

- Left Panel (Differences):** Shows the 'Synthesis' view with a tree structure of the 'In-Flight Entertainment System' model. A red box labeled 'Differences' highlights the 'P1 (83)' node, which contains a list of operational activities such as 'Deploy New Digital Media', 'Connect to Wifi Network', 'Provide Internet Access', 'Provide Connectivity', 'Play Ambiance Music', 'Broadcast Audio', 'Configure Availability Of Services', 'Audio Announcement', 'Priority Audio Announcement', 'Service Availability Schemes', 'Services Configuration', 'Digital Media Offer', 'Wifi Access', 'Connectivity', 'Ambiance Music', 'Provide Aircraft Localization', 'Use Entertainment Services (5)', 'Aircraft Direction', 'Aircraft Altitude', 'Imposed Movie', 'Moving Map', 'Chosen Movie', and 'Movie Selection'.
- Middle Panel (Left model):** Shows the 'In-Flight Entertainment System/In-Flight Entertainment System.aird' model. A red box labeled 'Left model' highlights the 'Define business strategy' node, which is a sub-activity of 'Operational Analysis'.
- Right Panel (Right Model):** Shows the 'In-Flight Entertainment System3/In-Flight Entertainment System.aird' model. A red box labeled 'Right Model' highlights the 'P1' node, which is a sub-activity of 'Operational Analysis'.

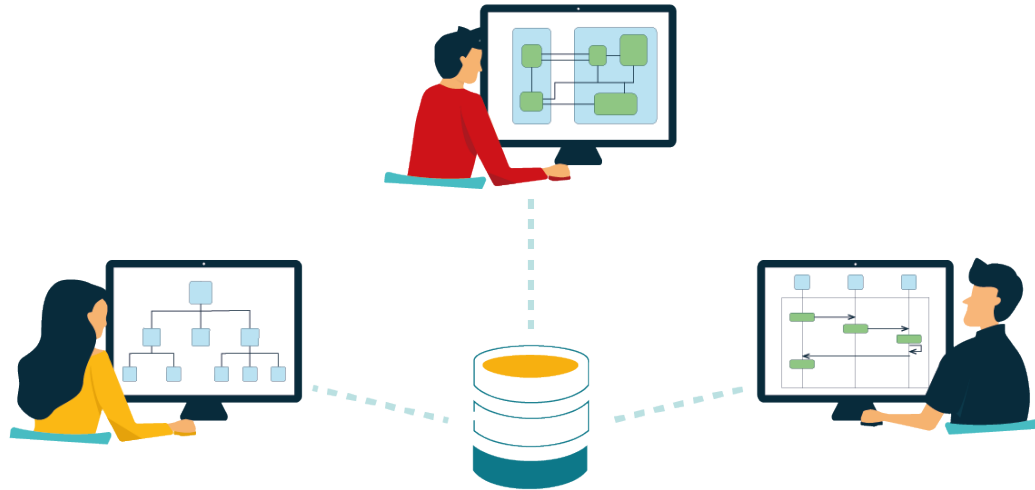
The bottom of each panel shows the 'Details of the Operational Activity' view, which is currently empty.



Team for Capella

Live collaboration

Team for Capella



**A COLLABORATIVE CAPELLA ADD-ON
TO SIMULTANEOUSLY EDIT MODELS WITH YOUR TEAM**

Team for Capella | Simultaneously edit models with your team members



Live Collaboration

Simultaneously work with other users and dynamically see their modifications.



Time Saving

Don't waste your time resolving conflicts generated by concurrent updates.

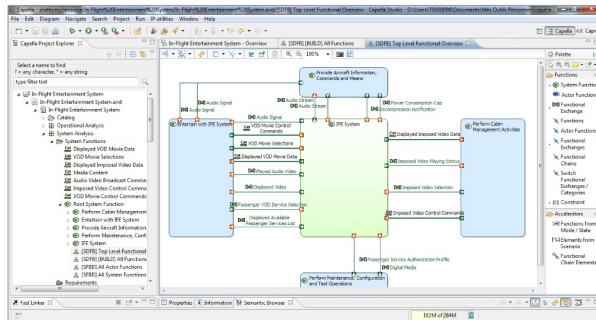


Standard Data Access

Your models and their representations always remain accessible.

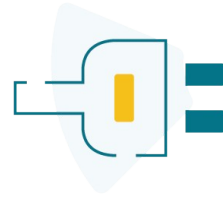
Components

Client



Capella Workbench + add-ons*

Team for Capella Client (Capella add-on)



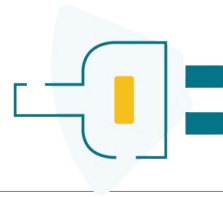
UI Additions:

- Export/Import/Connection wizards add-on
- Lock/Unlock actions
- Commit History view

Core components extension

- Client/Server communication
- Capella model alternate serialization

Other add-ons



Main add-ons features

- UI extensions (diagrams, layers, actions,...)
- Capella model extensions

Team for Capella extension*

- Model extensions alternate serialization

*To run other add-ons in a collaborative mode, you must install their *Team for Capella* extension (provided with most commercial and open-source add-ons)

Secured Access | Models are protected against unauthorized access



Connections rely on your **authentication** system (via LDAP / OpenId Connect)



Exchanges between the clients and the server can be **encrypted** (via HTTPS & SSL)

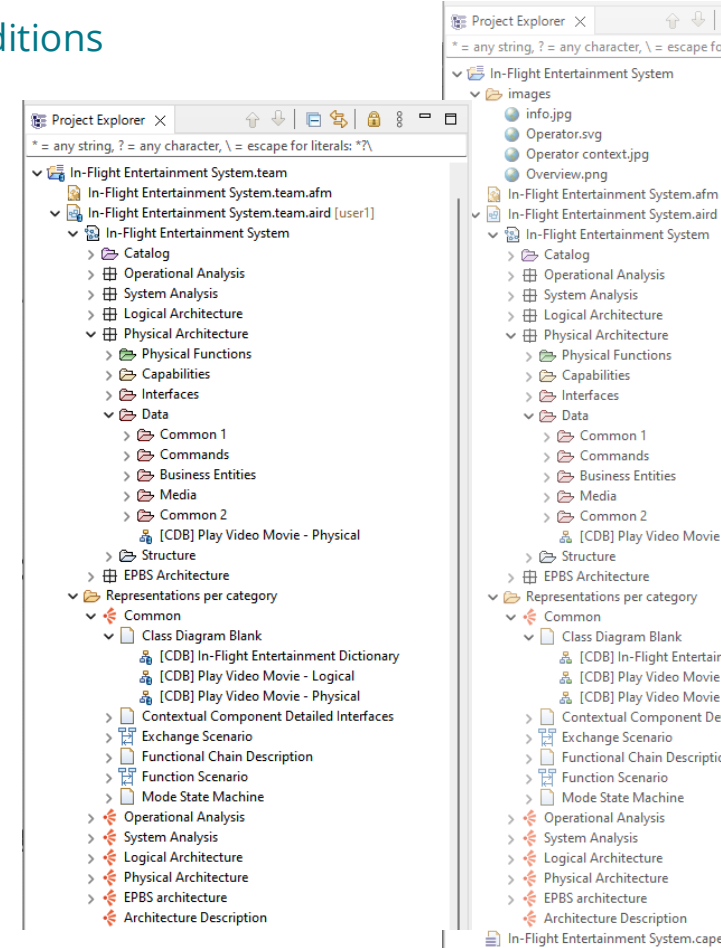


Access rights to models can be **configured** for each user

Team for Capella | UX similar to standard use of Capella, with additions

- **Capella Connected Project**

- 2 files:
 - .team.aird: connection information
 - .team.afm: metadata file version/Viewpoints consistency checks
- No more .capella nor images files: **data is stored on server**
- Lazy loading of graphical data
- Capella model tree still displayed as child of the .aird file
- Authentication at project opening




Team for Capella | UX similar to standard use of Capella, with additions

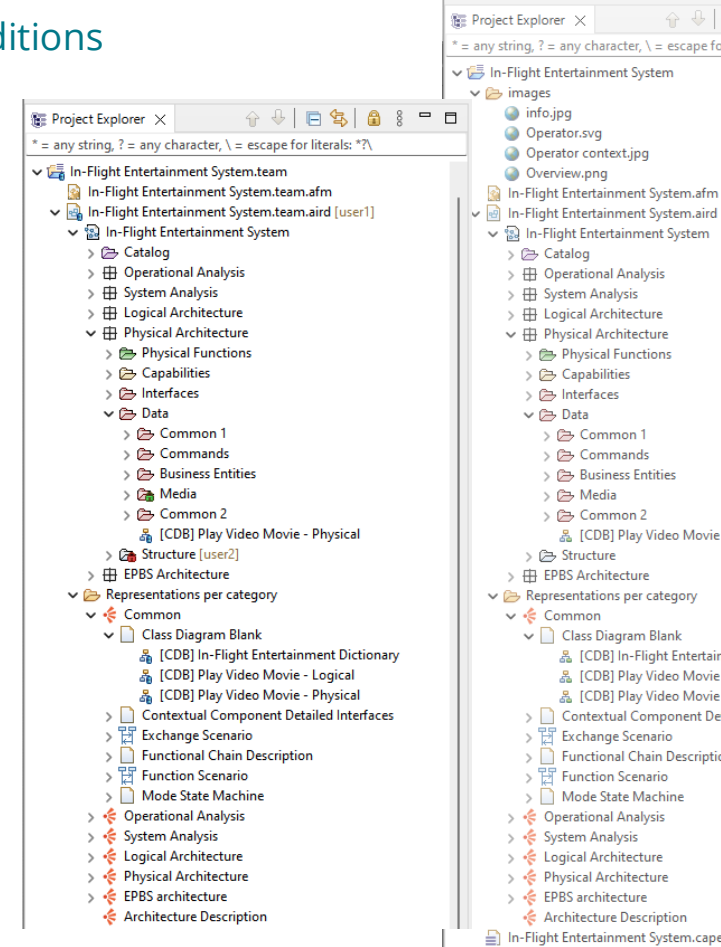
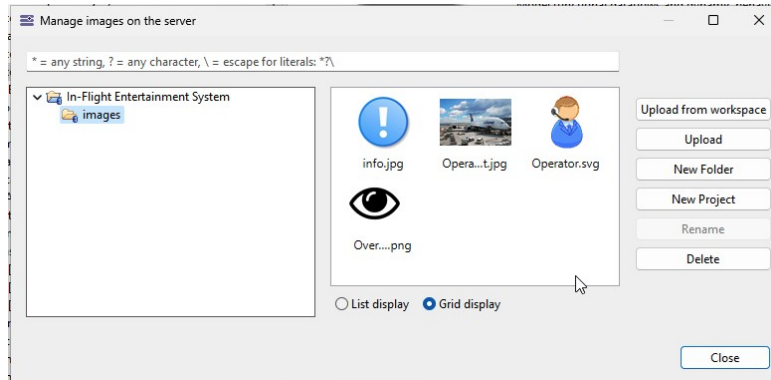
- Connected decorator: 

- Connected user indication:  In-Flight Entertainment System.team.aird [user1]

- Lock status information :
 - > Media
 - > Structure [user2]

- Contextual menus 

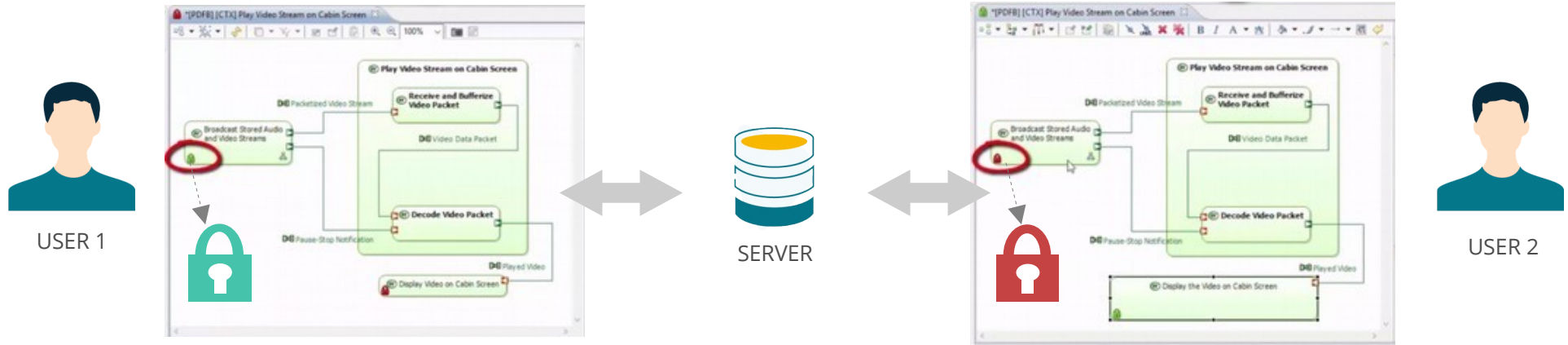
- Remote image management  Manage Images from Remote Server



Demo

- Connect to a project
- Live Collaboration

Team for Capella | Shared server and collaborative work mechanisms



Fine-Grained Locking

Objects are automatically **locked*** when modified and **unlocked** when saved



Real-time changes

Other users automatically see locks and access to **saved changes**

Keep track of changes | Commits History

Commits

Time	User	Description
06/09/18 09:13:04	user1	Add LF in LF8
06/09/18 09:12:07	user1	change LF8 parent
06/09/18 09:10:54	user1	Add realize SF
06/09/18 09:06:43	user1	Create new SF
05/09/18 18:01:10	user1	rename LF8
05/09/18 17:59:12	user1	Create 3 LF
05/09/18 17:50:31	user1	

Add realize SF

Related elements

- Root Logical Function
 - LogicalFunction 8_renamed
 - [Function Realization] to SystemFunction
 - new Diagram LFB
- Manage Passenger Services Lifecycle
 - Determine Service Availability
 - SystemFunction 1

File Edit Diagram Navigate Search Project Run Wi

- New Alt+Shift+N >
- Open Projects from File System...
- Recent Files >
- Close Editor Ctrl+W
- Close All Editors Ctrl+Shift+W
- Save Ctrl+S
- Save with Description Ctrl+Alt+S
- Save As...
- Save All Ctrl+Shift+S
- Revert

Commit Description

Please provide a description:

OK Ignore Cancel

Demo

- Save with description
- Commit history
 - Commit history changes / commit presentation
 - Diff/merge
- Export activity report

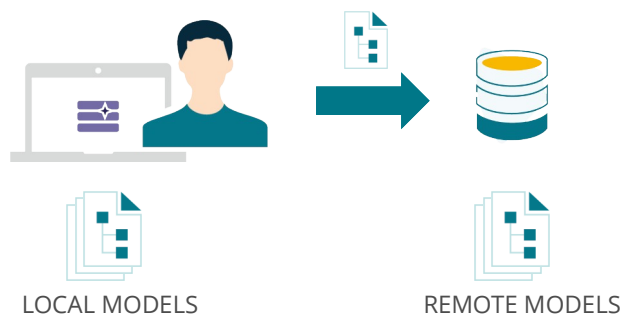


Team for Capella

Workflows

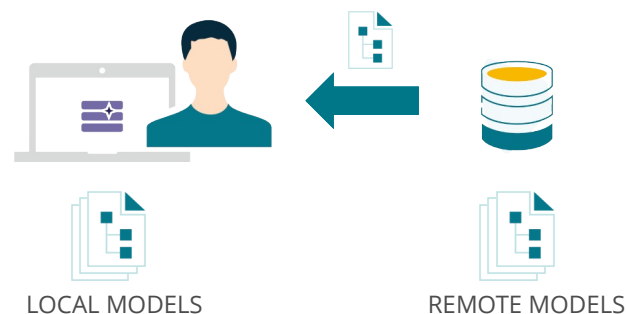
Import & Export | Working locally or remotely

Share a local project



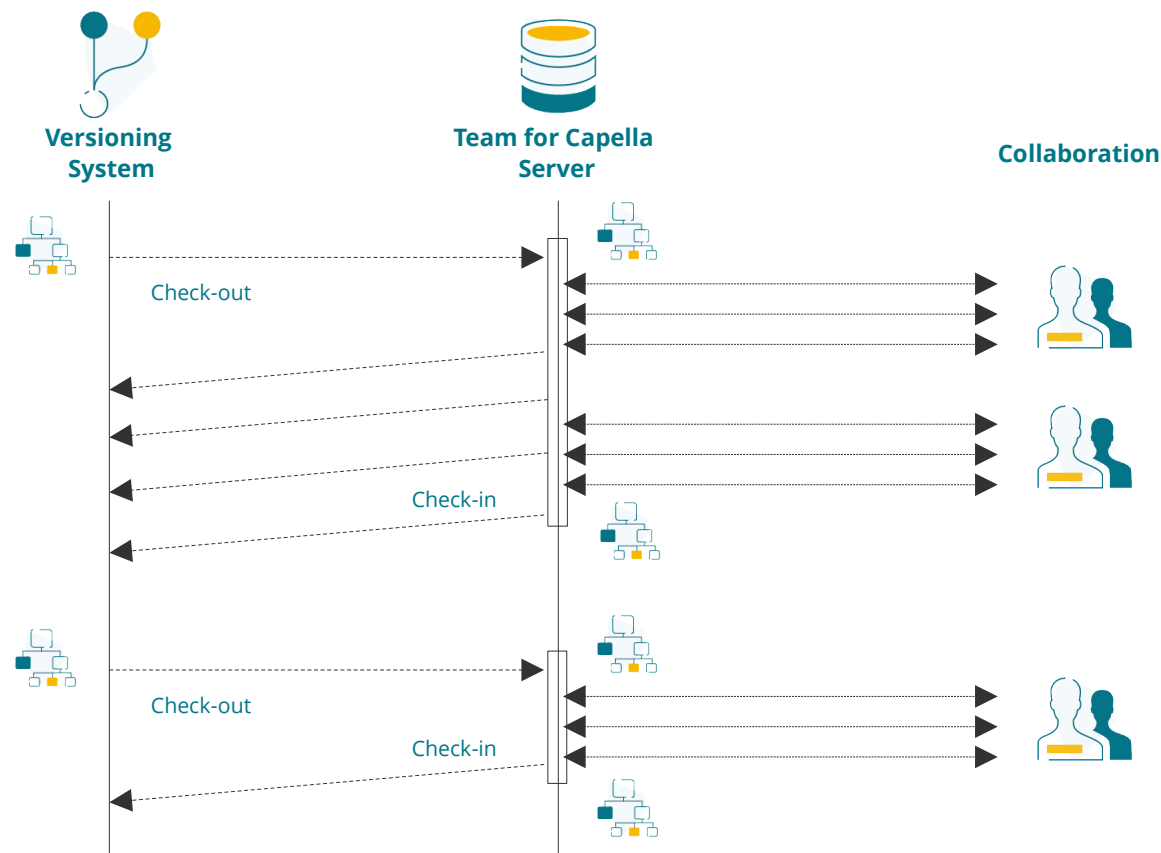
Upload a local project from your desktop to the server, to allow other users to simultaneously work on this project

Retrieve a remote project

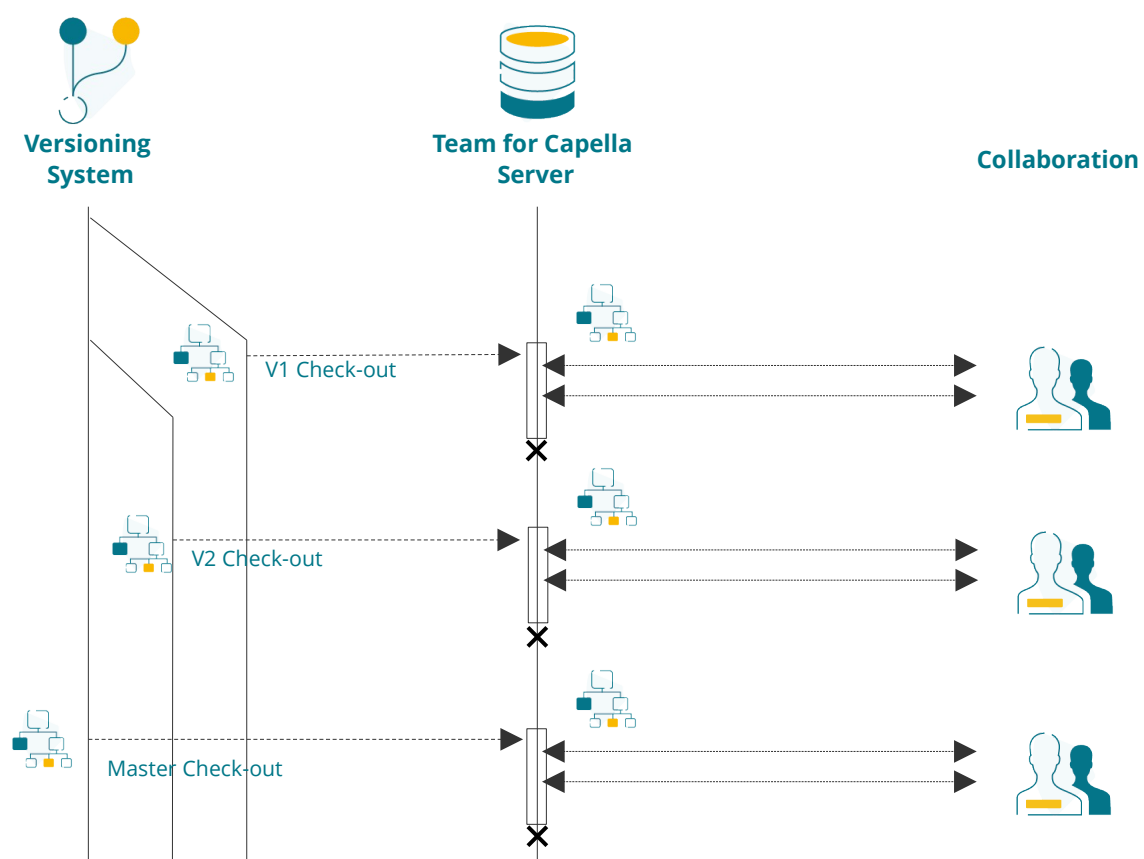


Download a remote project from the server to your desktop, to allow you to locally work on a copy of the project

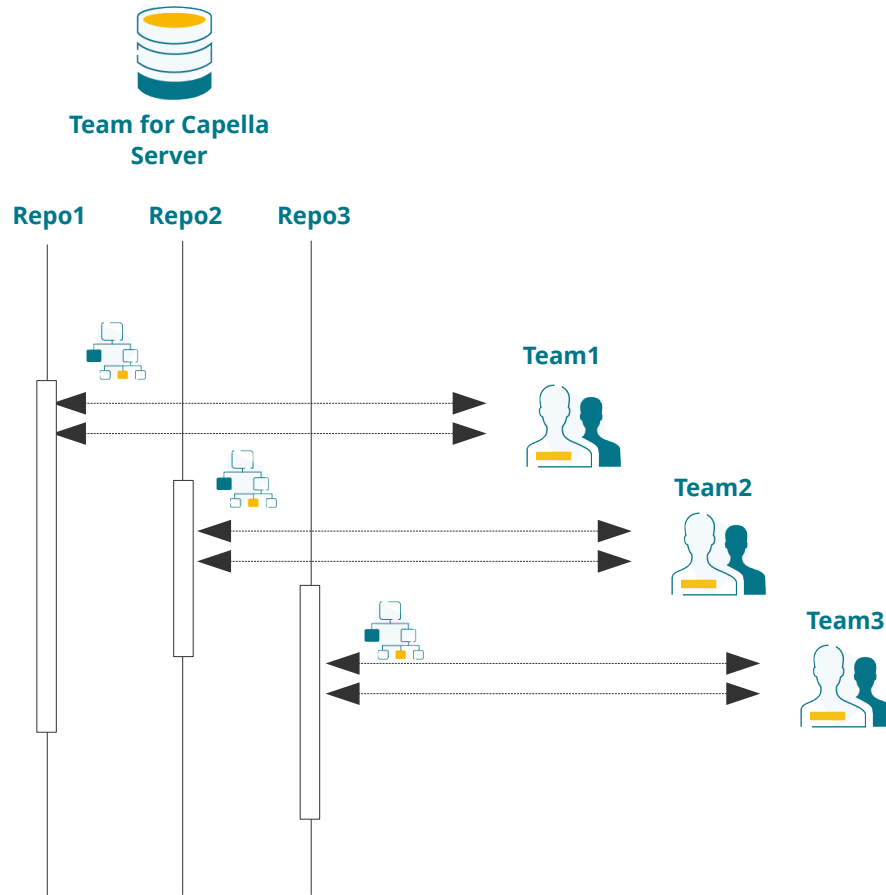
Version control | Easy to integrate into your IT (built-in Git support)



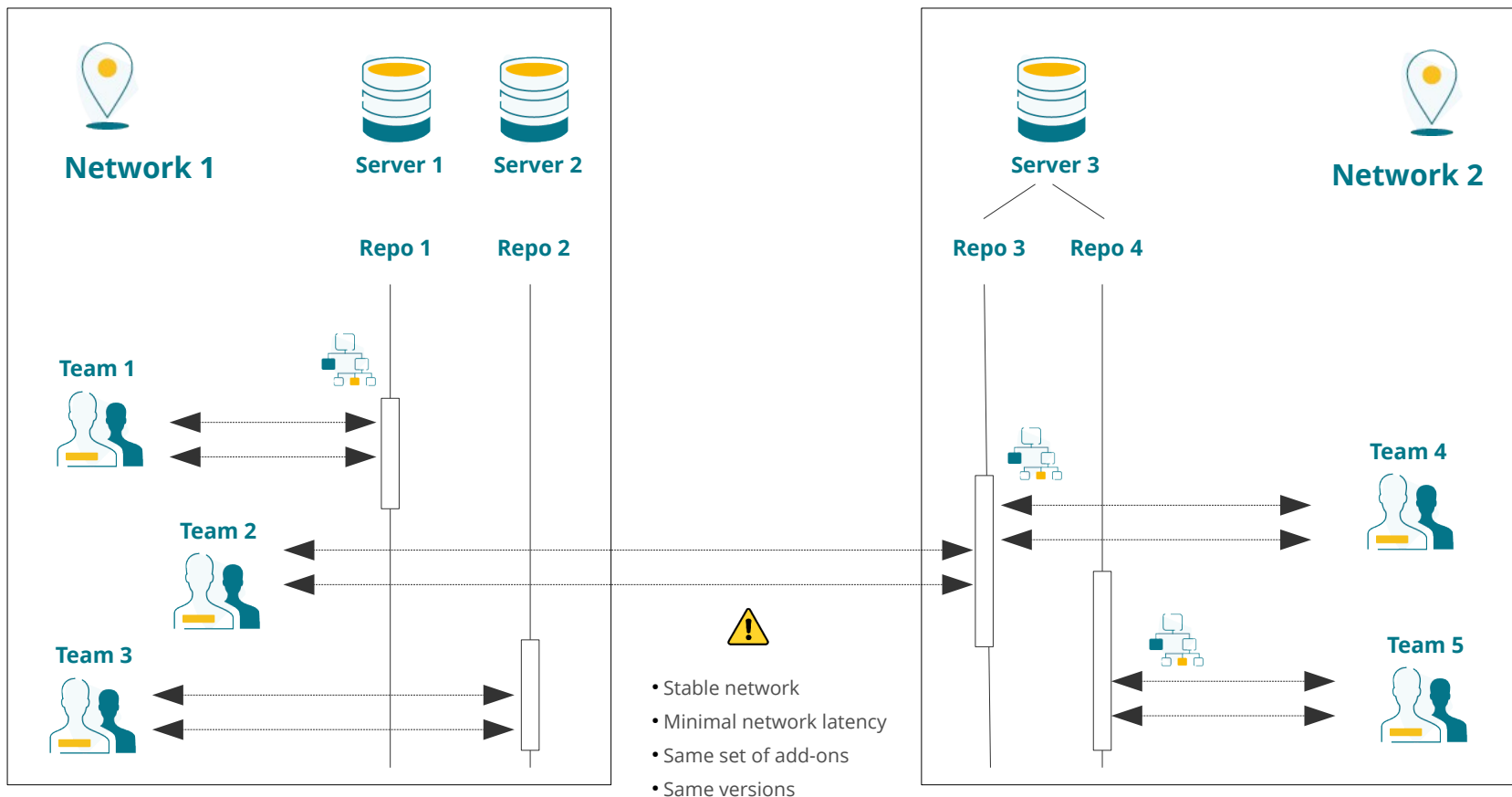
Version control | Easy to integrate into your IT (built-in Git support)



Simultaneous teams | Using several projects on several repositories



Geo-distributed teams | Using several servers



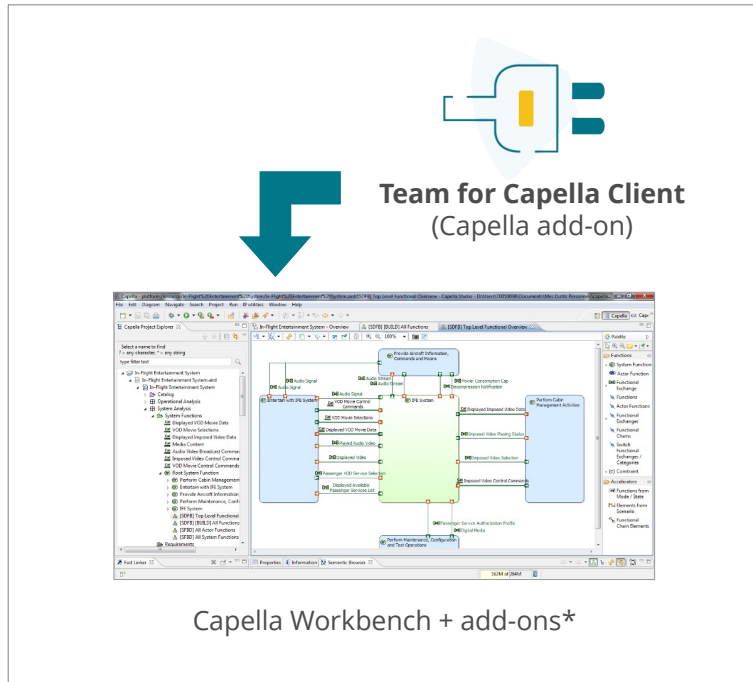


Team for Capella

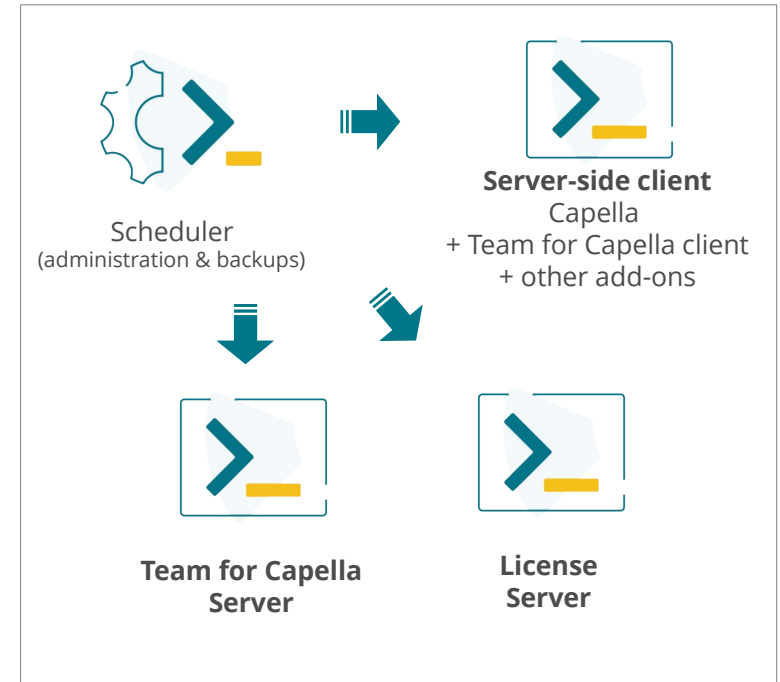
Deployments

Components

Client



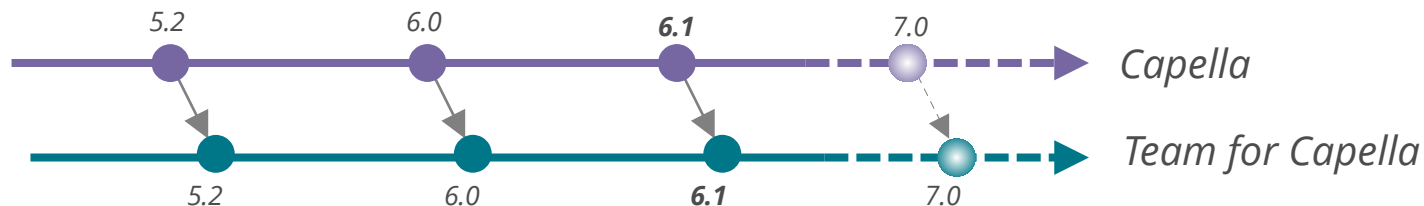
Server



*To run other add-ons in a collaborative mode, you must install their *Team for Capella* extension (provided with most commercial and open-source add-ons)

Release Cycle | Following closely Capella

- Release cycles aligned with Capella



Team for Capella 7.0 (July 2024)

- Compatibility with Capella 7.0
- UX enhancements
- Packaging, installation and deployment enhancements
- Server, Importer and Exporter enhancements



obeosoft.com/team-for-capella-releases

Deployment Modes



On-Premise

Deployed on
your own infrastructure

- ✓ *Rely on your IT*
- ✓ *Possible isolated system*
- ✓ *Possible customized deployment*



Cloud

Installed by Obeo on
a Cloud infrastructure

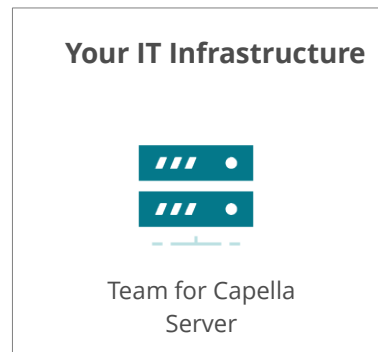
- ✓ *IT and deployment managed by Obeo*
- ✓ *Ready-to-use and uniform environment*
- ✓ *Easy collaboration with partners
and external entities*

On-Premise | Two deployment modes: **Local** or **Remote** client

LOCAL CLIENT



Team for Capella
Client *

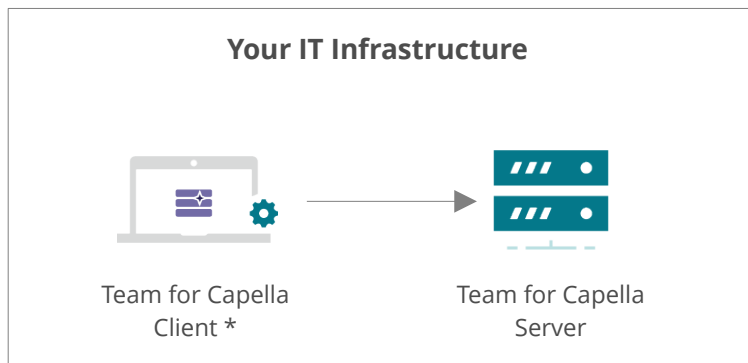


Easier to deploy

REMOTE CLIENT



Remote Desktop



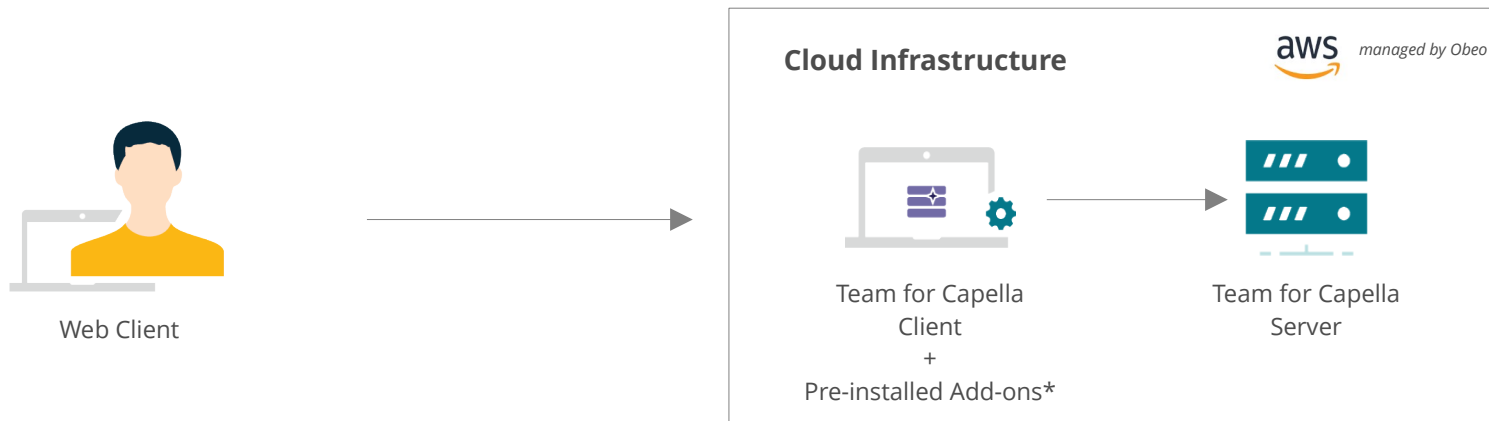
Better performances



Easier management

Cloud | Deployed for you on a dedicated Cloud infrastructure managed by Obeo

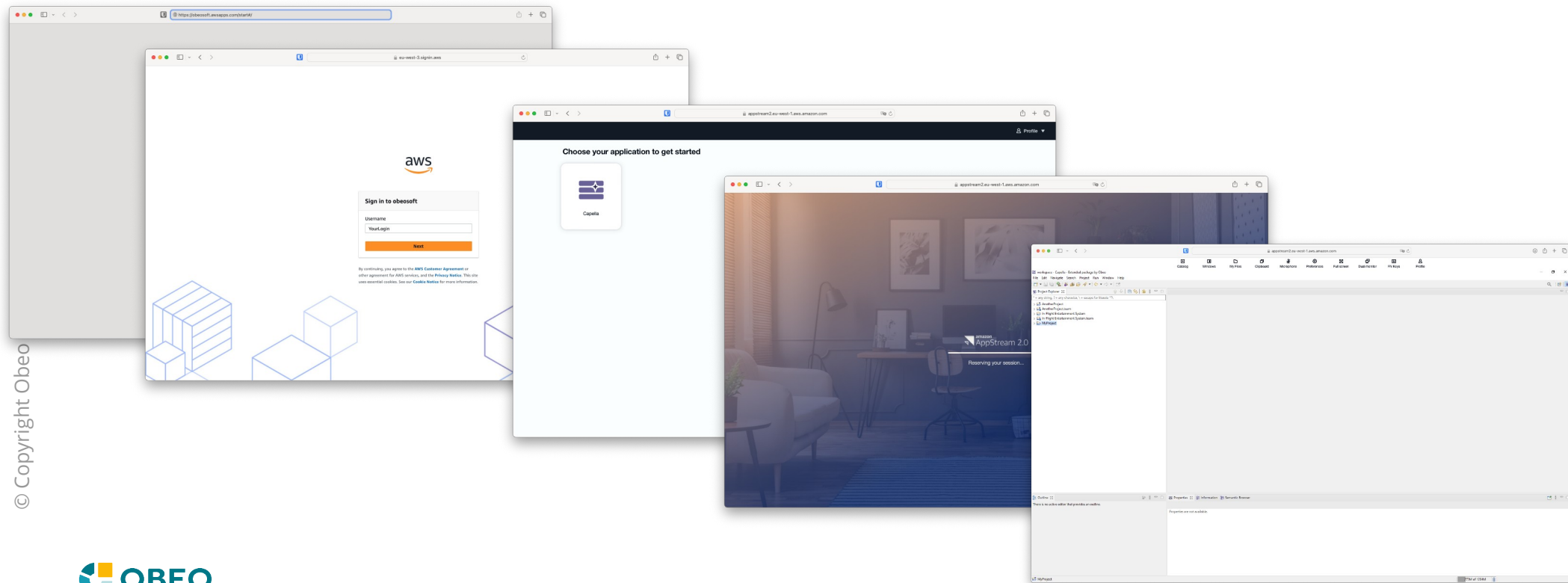
Cloud for Capella - Team



- ✓ Quick start on a ready-to-use environment
- ✓ Team and partners all on the same version
- ✓ Automatic and constant backups
- ✓ Scalability plan to handle increased usages

Cloud for Capella | Demo

- Access Capella in your web browser
- URL provided by Obeo



C4C Team | Included services

- **Installation**
 - Capella on virtual machines hosted in a cloud infrastructure
 - Selected additional add-ons
 - Team client add-on in Capella and a default server connection configuration.
 - Team server (including the Scheduler and Git) with a default repository on an additional virtual machine.
- **Administration**
 - Virtual machine hosting the Team clients : users account creation, recovery, ...
 - Virtual machine hosting the Team server.
- **Assistance to upgrade**
 - Capella, selected additional add-ons, Team client and server.
- **Maintenance and support***
 - Assistance related to the cloud infrastructure
 - Support on the integration of installed add-ons
 - Support on Team and M2Doc features.

Cloud for Capella | A few numbers

- **Different kind of usage observed in current deployments**

- Deployment over several years
- PoC deployment to test the collaboration and different workflow before adoption and on premise deployment

- Single repository,
- 2 users working on a few shared projects
- Users also on their own local projects not yet or no more requiring collaboration

- 1~5 repositories,
- 2-5 projects per repository,
- 2~5 registered users per repository
- Users from different companies

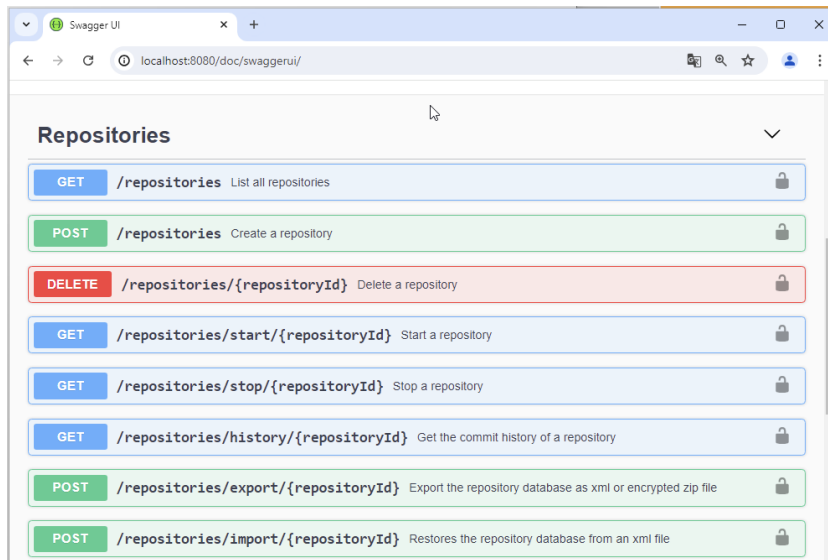
- Single repository,
- 15 System Engineers working at the same time on the shared model
- Big model (~700 diagrams)
- A few file based variants, slightly and carefully modified

- ~20 dynamic repositories (created/managed by customer)
- 1 project per repository,
- 2-3 System Engineers working on each repository

Repositories management | Static or Dynamic repositories



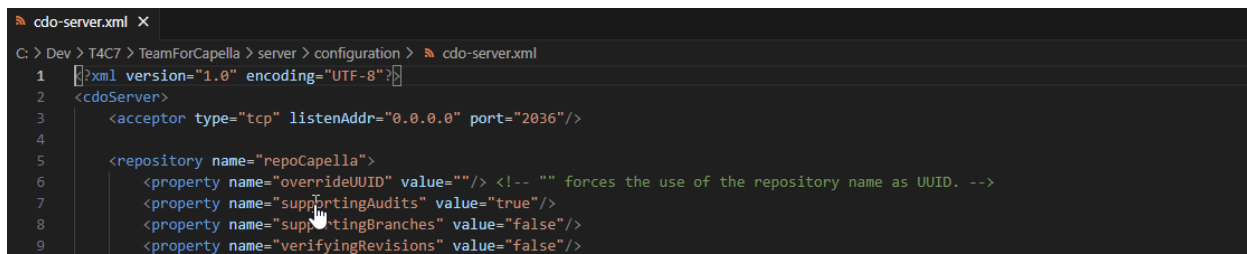
Administrator



Web Browser for dynamic repositories



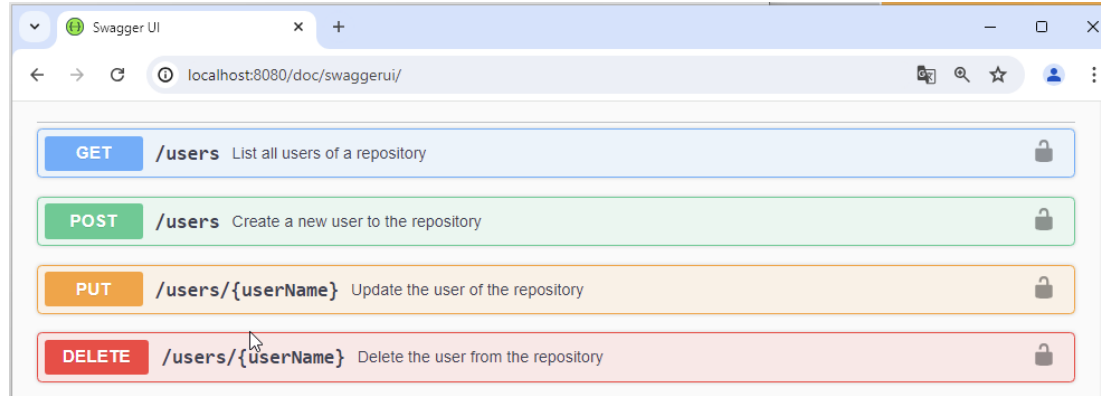
Configuration files + Server restart for static repositories



User management | Per repository

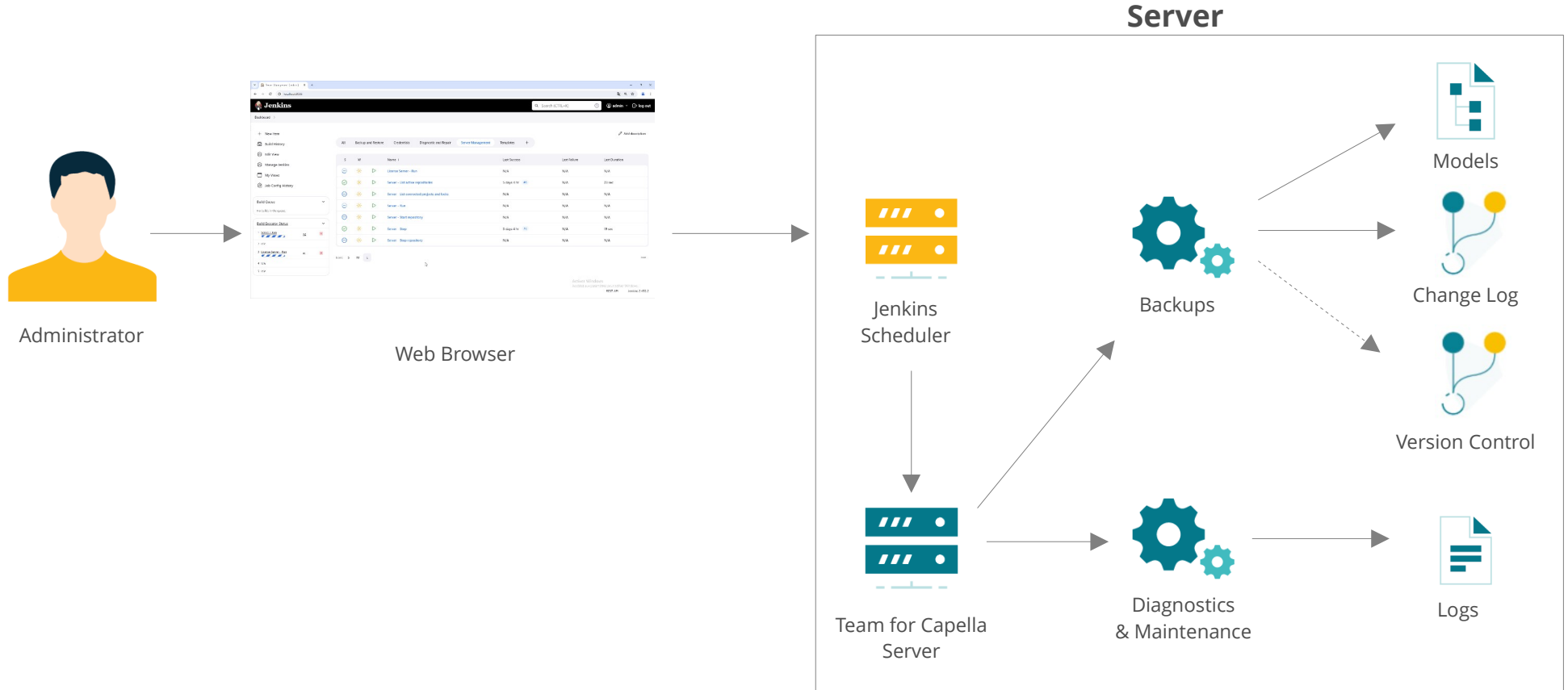


Administrator



Web Browser for both static and dynamic repositories *

Automate regular tasks | Backups, maintenance, monitoring, ...



Automate regular tasks | Jenkins scheduler

All Backup and Restore Credentials Diagnostic and Repair Server Management Templates +				
S	W	Name ↓		Last Success
...	☀	▶	Database - Backup	N/A
...	☀	▶	Database - Restore	N/A
...	☀	▶	Projects - Delete	N/A
...	☀	▶	Projects - Export	N/A
...	☀	▶	Projects - Import - repoCapella	N/A
...	☀	▶	Repository - Commit history	N/A
...	☀	▶	Repository - Import projects from history	N/A
...	☀	▶	Repository - List projects	N/A
⌚	☀		User profile - Import model	N/A

All Backup and Restore Credentials Diagnostic and Repair Server Management Templates +				
S	W	Name ↓		Last Success
...	☀	▶	Server - Rest Admin - Manage User Tokens	N/A
...	☀	▶	Server - Rest Admin - Manage Users	N/A
...	☀	▶	Tools - Clear credentials	N/A
...	☀	▶	Tools - Store credentials	N/A

All Backup and Restore Credentials Diagnostic and Repair Server Management Templates +				
S	W	Name ↓		Last Success
...	☀	▶	Repository - Diagnostic	N/A
...	☀	▶	Repository - Maintenance	N/A

All Backup and Restore Credentials Diagnostic and Repair Server Management Templates +				
S	W	Name ↓		Last Success
...	☀	▶	License Server - Run	
✓	☀	▶	Server - List active repositories	
...	☀	▶	Server - List connected projects and locks	
...	☀	▶	Server - Run	
...	☀	▶	Server - Start repository	
✓	☀	▶	Server - Stop	
...	☀	▶	Server - Stop repository	

All Backup and Restore Credentials Diagnostic and Repair Server Management Templates +				
S	W	Name ↓		Last Success
⌚	☀		Projects - Automatic Import and push to Git - Template	
⌚	☀		Projects - Manual Import and push to Git - Template	

Automate regular tasks | [Jenkins scheduler](#)

- **Default provided jobs can be modified, extended to match your policy**
 - Backup frequency,
 - Backup result export to your SCM tools (Git/GitLab)
- **Team for Capella import jobs can also be combined with other steps**
 - Capella provides its own command line tools
 - Refresh all representations
 - Model validation
 - Export representations as Images
 - Extended by several add-ons
 - XHTML generation
 - Python for Capella
 - M2Doc
 - ...

References | They use Team for Capella



Team for Capella | Wrap-up



Live Collaboration

Simultaneously work with other users and dynamically see their modifications.



Time Saving

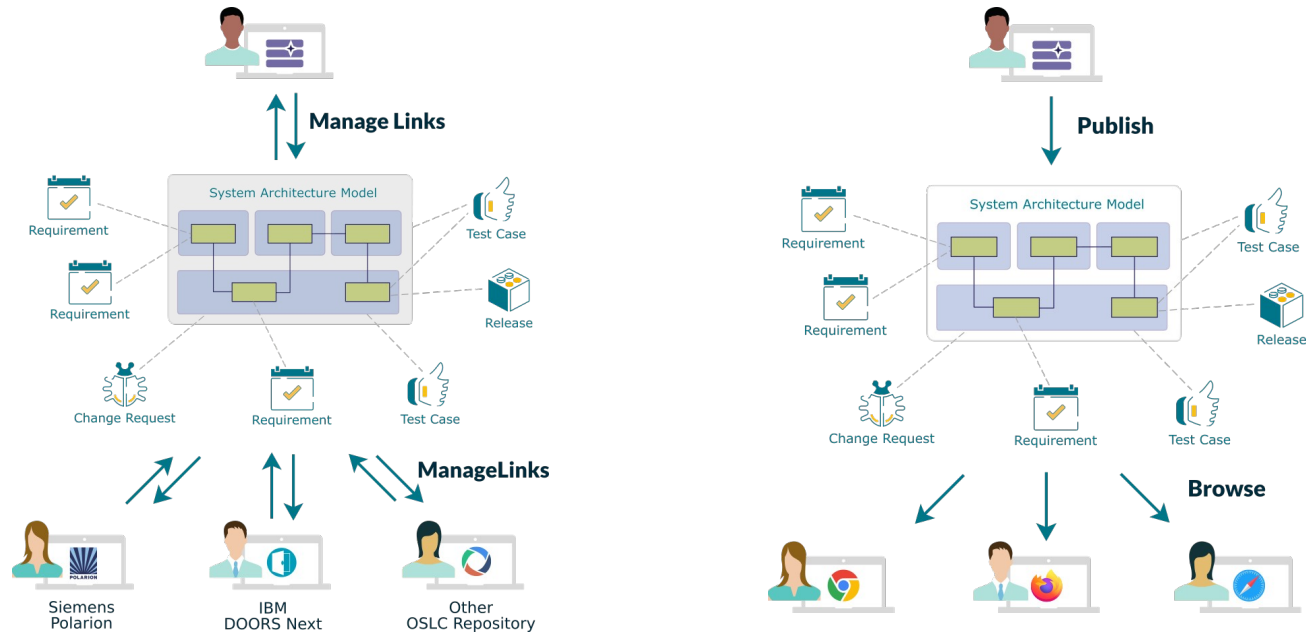
Don't waste your time resolving conflicts generated by concurrent updates.



Standard Data Access

Your models and their representations always remain accessible.

Publication for Capella | Manage Traceability and Publish Models



Integrated sources of truth

Author system design and work items with dedicated, but connected, tools and make this data available across different engineering disciplines.